

THE PENTHOUSE COLLECTION  
EXCLUSIVE TWO-STOREY HOMES

# The Bennett

THREE BEDROOM  
PLUS FAMILY ROOM + DEN

**2,492 SF TOTAL**

1,593 SF Interior  
plus 49 SF Balcony  
and 850 SF Terrace



# UOVO

BOUTIQUE RESIDENCES  
AT YONGE AND DAVISVILLE

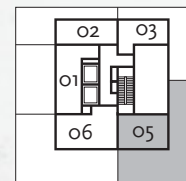
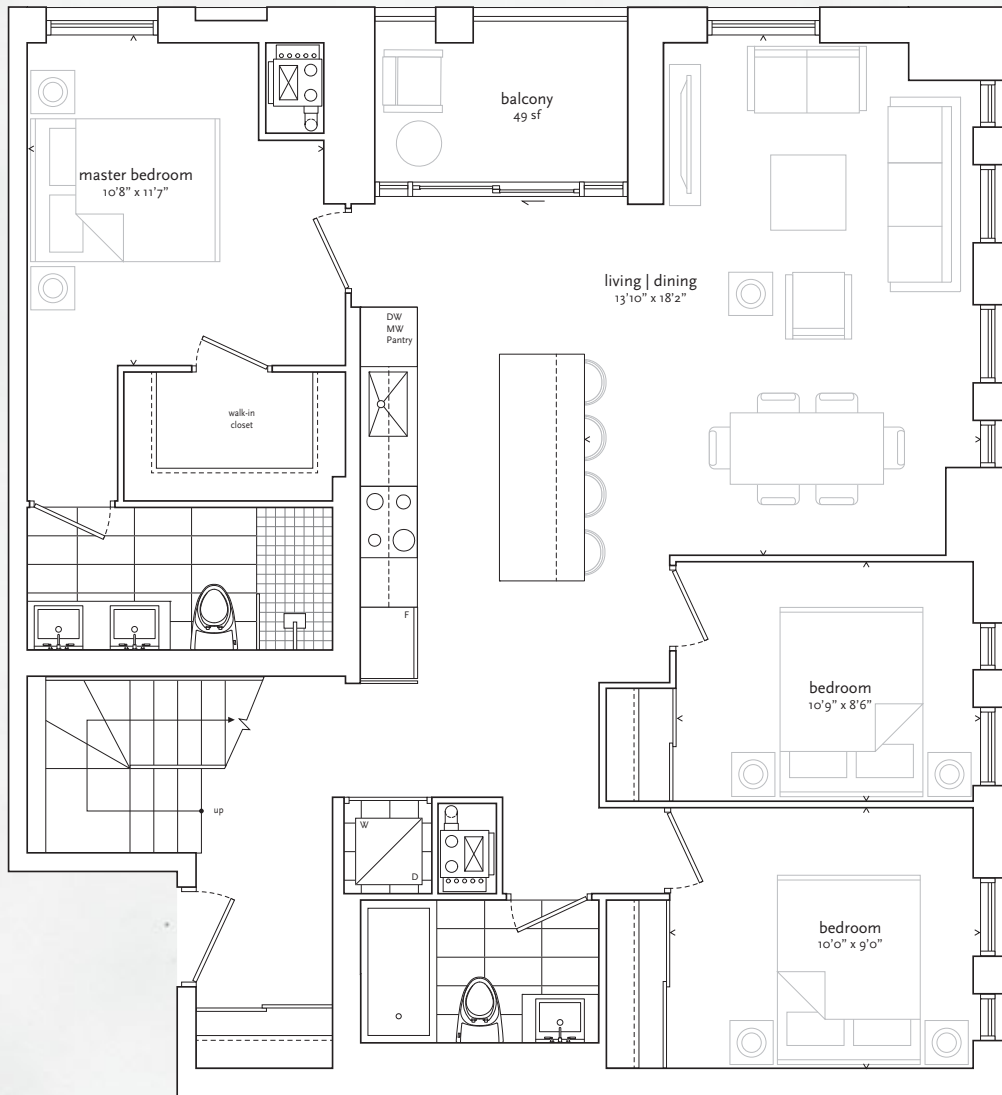


*upper level*

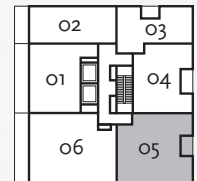
# The Bennett

THREE BEDROOM  
PLUS FAMILY ROOM + DEN

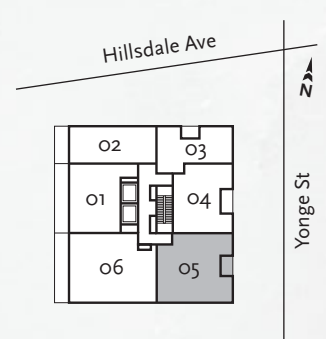
2,492 SF TOTAL / 1,593 SF Interior / 49 SF Balcony + 850 SF Terrace



Level 10



Level 9





UOVO

BOUTIQUE RESIDENCES  
AT YONGE AND DAVISVILLE

*uovoresidences.com*

416.306.8444

PRESENTATION GALLERY  
2112 YONGE STREET, JUST SOUTH OF HILLSDALE AVE.

EXCLUSIVE LISTING BROKERAGE: BRICK+MORTAR REALTY INC.

All details, sizes and specifications are subject to change without notice. E.&O.E.

creative+strategy: the walsh group, september 2018 ©