

THE PENTHOUSE COLLECTION
EXCLUSIVE TWO-STOREY HOMES

The Sinatra

THREE BEDROOM
PLUS FAMILY ROOM + DEN

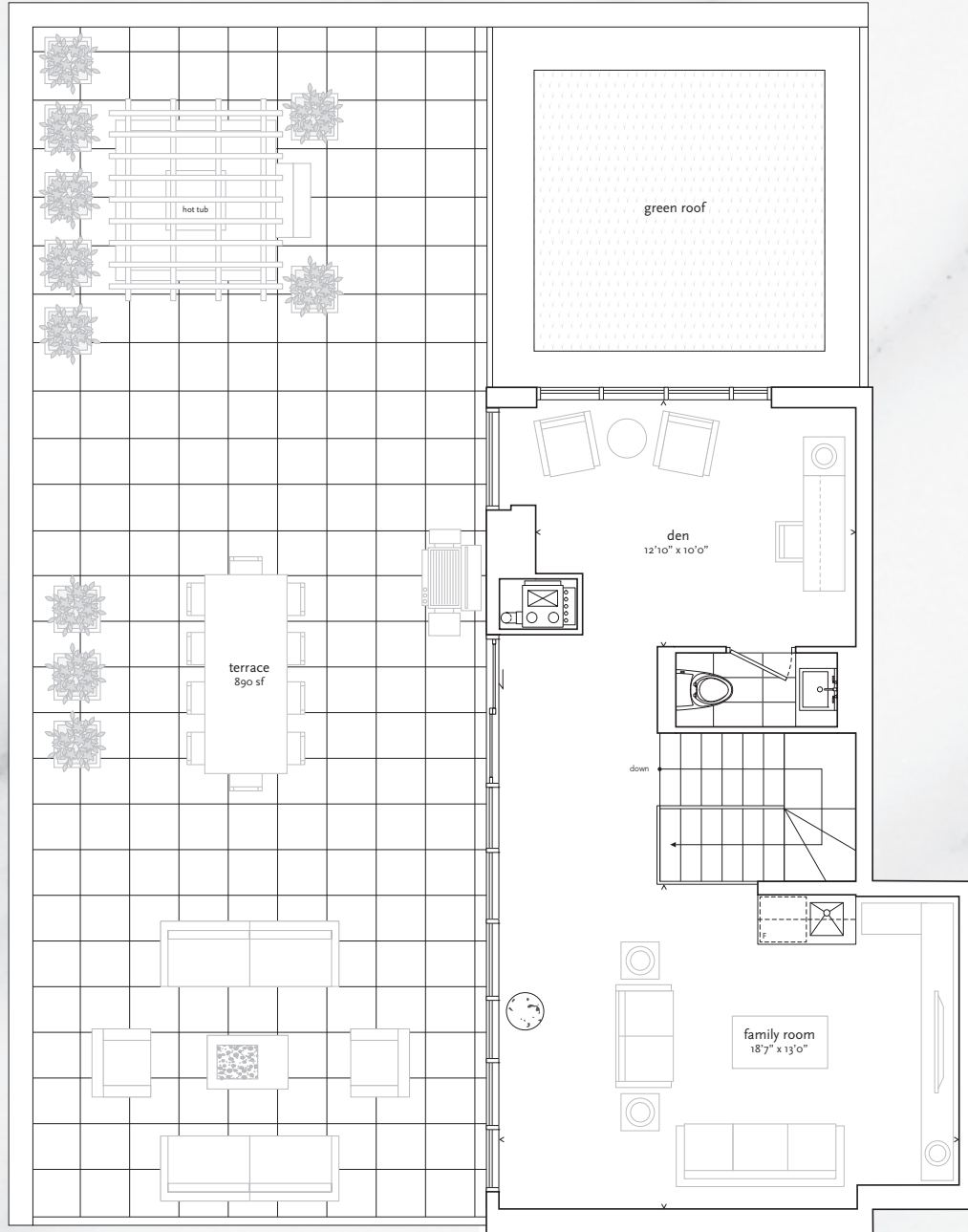
3,086 SF TOTAL

2,009 SF Interior
plus 187 SF Balcony
and 890 SF Terrace



uovo

BOUTIQUE RESIDENCES
AT YONGE AND DAVISVILLE



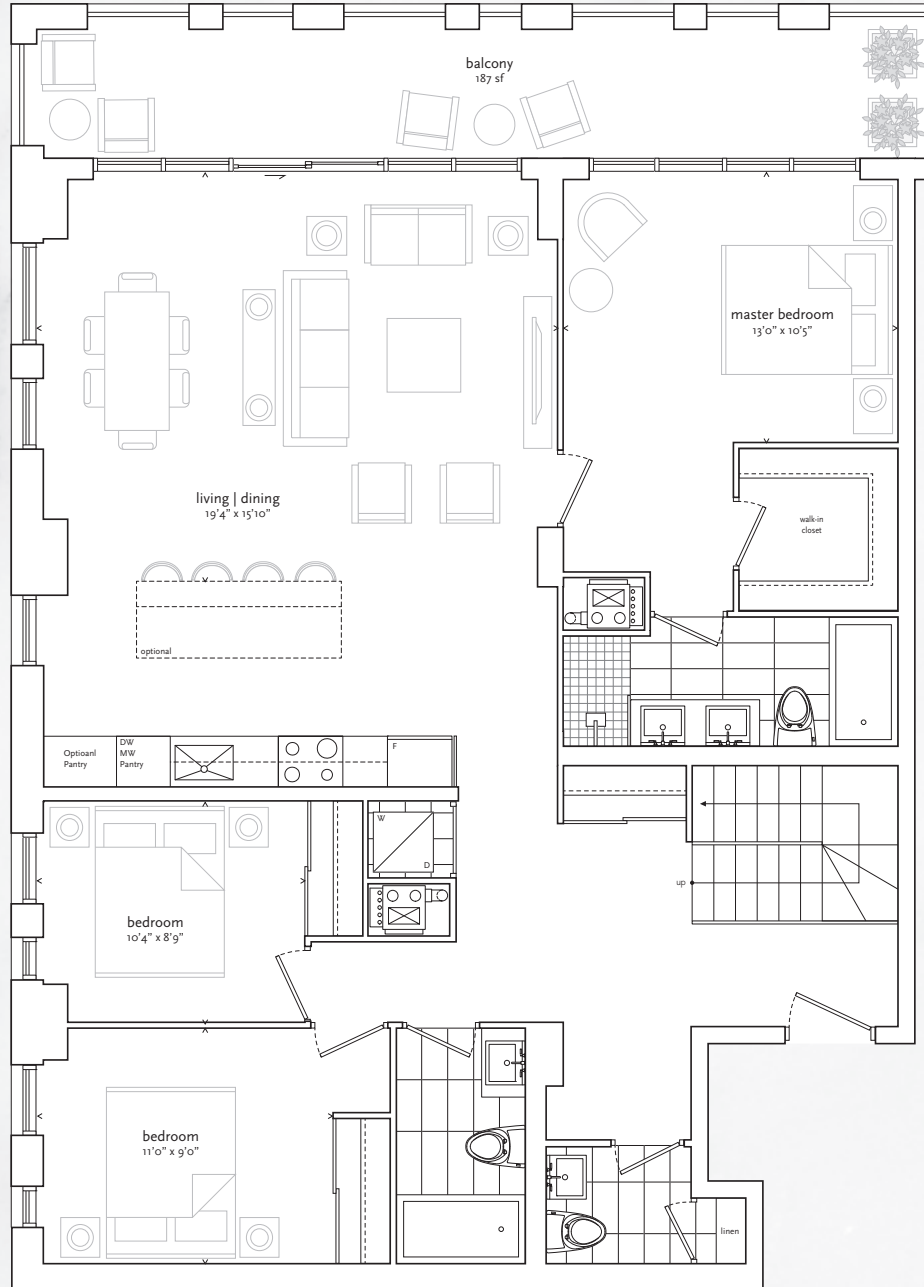
upper level

Final placement of hot tub may vary based on consultation with builder.

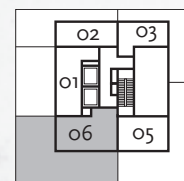
The Sinatra

THREE BEDROOM
PLUS FAMILY ROOM + DEN

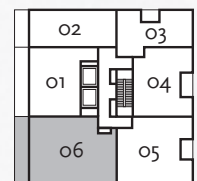
3,086 SF TOTAL / 2,009 SF Interior / 187 SF Balcony + 890 SF Terrace



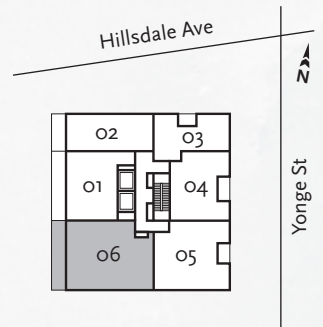
main level



Level 10



Level 9





uovo

BOUTIQUE RESIDENCES
AT YONGE AND DAVISVILLE

uovoresidences.com

416.306.8444

PRESENTATION GALLERY
2112 YONGE STREET, JUST SOUTH OF HILLSDALE AVE.

EXCLUSIVE LISTING BROKERAGE: BRICK+MORTAR REALTY INC.

All details, sizes and specifications are subject to change without notice. E.&O.E.

creative+strategy: the walsh group, september 2018 ©